

Weekly Report
Report # 11

March 21, 2020

Norway House Cree Nation

Health Centre of Excellence



Project:

- CD3 – Professional Accommodations

Larry Cove

JNR Construction

Project Name: Professional Accommodations		Project Number: CD3 – 19015B	
Safety Statistics			
Description	Previously Reported	This Period	Project to Date
Man Hours	20860.25	1242.5	22102.75
FLHAs	2454	176	2630
First Aides	6	1	7
Incidents	7	1	8
Quality/Engineering			
Items	Submitted	Resolved	Outstanding
RFIs	24	24	0
Shop Drawings	33	19	14
NCRs	0	0	0

Outstanding Concerns:

- RFIs

- Shop Drawings
 - o SD 020 – Roof Trusses – Feb 26/20
 - o SD 021 – Electrical CSTE – Feb 27/20
 - o SD 022 – Electrical Transformer – Feb 27/20
 - o SD 023 – Electrical Lighting – Feb 27/20
 - o SD 024 - Electrical Channels – Feb 27/20
 - o SD 025 – Electrical Door – Feb 27/20
 - o SD 026 – Electrical Heat – Feb 27/20
 - o SD 027 – Electrical Fire Alarm – Feb 27/20
 - o SD 028 – Electrical Structure – Feb 27/20
 - o SD 029 – Electrical Distribution – Feb 27/20
 - o SD 030 – Mechanical Insulation – Feb 28/20
 - o SD 031 – Mechanical Ventilation – Feb 28/20
 - o SD 032 – Plumbing Fixtures – Feb 28/20
 - o SD 033 – Sikadur 25 Super-Low Viscosity Injection Resin – March 5/20

Completed This Period	Comments or Concerns
Grind down and level center beam (east side of bldg.)	
Install sill plate on center beam	
Install beams on east side of building (east side of bldg.)	
Install main floor wood trusses including blocking and strong backs (west side of bldg.)	
Install sheathing on main floor (west side of bldg.)	
Install risers and grout on sump pits	
Backfill and install poly in crawlspace (east side of bldg.)	
Place sand over poly in crawlspace (east side of bldg.)	
Place concrete pavers in crawlspace (west side of bldg.)	
To Complete Next Period	To complete the following Period
Continue installing main floor wood trusses (east side of bldg.)	
Install remaining beams (east side of bldg.)	
Install sheathing on main floor (east side of bldg.)	Continue with main floor sheathing
Stand prefab exterior walls (west side of bldg.)	Continue with standing prefab exterior walls
Construct form work for second phase of elevator shaft concrete wall	Install rebar for elevator shaft concrete wall
Mechanical contractor to hang ductwork in crawlspace	
Continue placing concrete pavers in crawlspace	Install covers on sump pits

Progress Photos



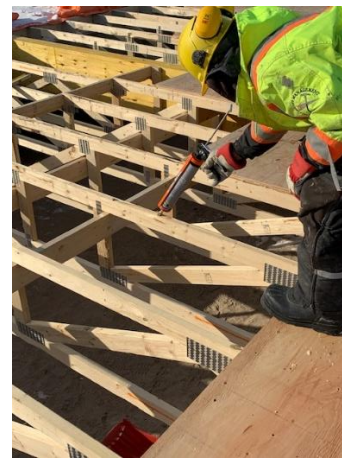
Strong Back Installation on Floor Trusses



Blocking Installation on Floor Trusses



Floor Sheathing Installation



Sub Floor Adhesive Application

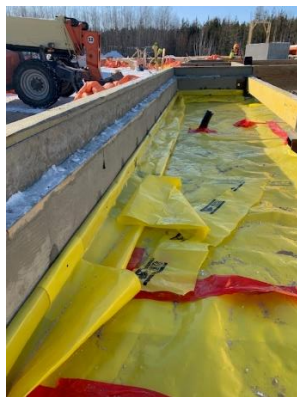
Progress Photos



Backfill and Compact Subbase Material in Crawlspace



Floor Truss Installation



Poly Installation in Crawlspace



Placement of Sand over Poly

Progress Photos



Grout Risers on Sump Pits



Concrete Paver Installation in Crawlspace