

Weekly Report

Report # 39

November 14, 2020

# Norway House Cree Nation

Health Centre of Excellence



Project:

- CD3 – Professional Accommodations

Larry Cove

JNR Construction

<b>Project Name:</b> Professional Accommodations		<b>Project Number:</b> CD3 – 19015B	
<b>Safety Statistics</b>			
Description	Previously Reported	This Period	Project to Date
Man Hours	42830	452	43282
Sub trades	8153	531	8684
FLHAs	6137	79	6216
First Aides	14	0	14
Incidents	11	1	12
Daily Covid-19 Screenings	2735	100	2835
<b>Quality/Engineering</b>			
Items	Submitted	Resolved	Outstanding
RFIs	79	79	0
Shop Drawings	96	95	1
Green Globes	17	17	0

**Outstanding Concerns:**

- RFIs
- Shop Drawings
  - SD079 – Crawlspace Floor Access Hatch – November 9/20
- Green Globes

Completed This Period	Comments or Concerns
Window Head Flashing Install	
Rigid Insulation Install on Exterior	
Exterior Strapping	
Flashing Install on Canopy Parapet	
Pergola Bracket and Formwork for Concrete Pad	
Drywall Tape and Mud Applied to Gypsum Board	
Gypsum Board Install on Main Floor Ceilings	
Steel Stud Track Install on Main Floor	
Sanitary Connections in Crawlspace and Air Testing	
Domestic Water Line Piping on Second Floor and Crawlspace	
Ductwork Install on Second Floor	
To Complete Next Period	To complete the following Period
Gypsum Board Install on Main Floor	Gypsum Board Install on Main Floor
Exterior Rigid Insulation Install	
Strapping Install on Exterior Walls	
Insulation on Ductwork	Insulation on Ductwork
Mechanical Rough Ins	Mechanical Rough Ins
Steel Stud Walls Install on Main Floor	Steel Stud Walls Install on Main Floor
Electrical Rough Ins	Electrical Rough Ins
Fiber Cement Board Siding	Fiber Cement Board Siding

Progress Photos



Exterior View – South East Wing



Exterior View – South West Wing



Exterior View – North East Wing



Exterior View – North West Wing

Progress Photos



Above Window Head Flashing Install  
- South West Wing



Exterior Strapping Install  
- South East Wing



Flashing Install on Parapet



Bracket Install for Pergola

Progress Photos



Formwork for Pergola Concrete Pad



Exterior Rigid Insulation Install  
– South West Wing



Tape and Mud Applied to Gypsum  
Board on Main floor Ceiling - West Wing



Gypsum Board Install on Main Floor  
Suite Ceiling – East Wing

Progress Photos



Steel Stud Track Install on Main Floor Suite – West Wing



Sanitary Line Install in Crawlspace

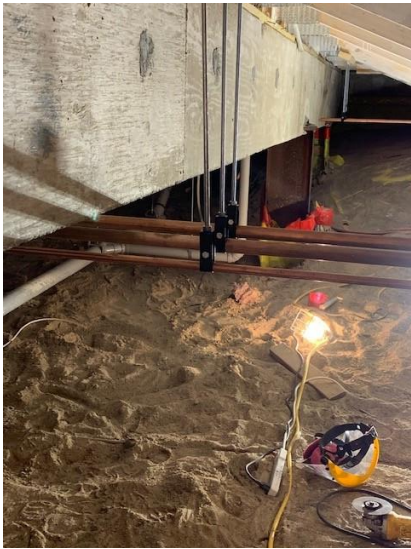


Sanitary Line Air Test – West Wing



Domestic Water Line Install on Second Floor – East Wing

Progress Photos



Domestic Water Line Install in Crawspace  
– East Wing



Ductwork Install in Second Floor  
Suite – West Wing



Ductwork Install in Second Floor  
Suite – East Wing