

Weekly Report

Report # 17

May 16, 2020

Norway House Cree Nation

Health Centre of Excellence



Project:

- CD3 – Professional Accommodations

Larry Cove

JNR Construction

Project Name: Professional Accommodations		Project Number: CD3 – 19015B	
Safety Statistics			
Description	Previously Reported	This Period	Project to Date
Man Hours	26895.25	898.5	3593.73
Sub trades	36	88	124
FLHAs	3330	105	3435
First Aides	10	1	11
Incidents	9	0	9
Daily Covid-19 Screenings	217	92	309
Quality/Engineering			
Items	Submitted	Resolved	Outstanding
RFIs	30	28	2
Shop Drawings	43	38	5
NCRs	0	0	0

Outstanding Concerns:

- RFIs
 - RFI 028 – Motorized Intake/Exhaust Damper for ERV Sizes - May 5/20
 - RFI 030 – Sump Pit Covers – May 15/20
- Shop Drawings
 - SD 033 – Sikadur 25 Super-Low Viscosity Injection Resin – March 5/20
 - SD 018 Rev 2 – VRV System – May 12/20
 - SD 019 Rev 1 – Second Floor Wood Trusses – May 14/20
 - SD 020 Rev 1 – Roof Trusses – May 14/20
 - SD 015 Rev 1 – Main Floor Wood Trusses – May 15/20

Completed This Period	Comments or Concerns
Construct crawlspace fire stop walls	
Frame second floor exterior walls – west side of building	
Install sheathing on second floor exterior walls- west side of building	
Erect second floor exterior walls- west side of building	
Install poly detail and rim boards between main and second floor	
Plumbing cut outs for plumbing lines – west side of building	
Elevator shaft and ceiling concrete curing	Cure concrete for seven (7) days
To Complete Next Period	To complete the following Period
Frame second floor exterior walls – east side of building	Continue with framing second floor exterior walls – east side of building
Install sheathing on exterior walls – east side of building	Continue sheathing of exterior walls – east side of building
Finish crawlspace fire stop walls	
Install second floor wood trusses – east side of building	
Install second floor sheathing on east side of building	
Remove formwork from elevator concrete shaft and ceiling	
Mechanical cutouts and install plumbing risers and duct work	Continue with plumbing and duct work installation
Erect second floor exterior walls – east side of building	Continue with erection of exterior walls on east side of building
Construct and erect second floor interior and demising walls – west side of building	Continue with second floor interior and demising wall installation – west and east side of building

Progress Photos



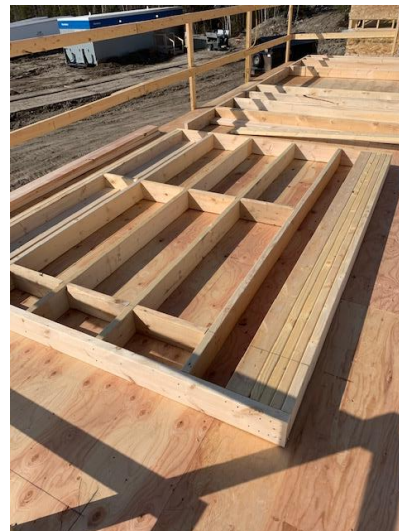
Exterior View – North West Side



Exterior View – South West Side



Second Floor Exterior Wall
– North West Side



Second Floor Exterior Wall Framing
– South View West Side

Progress Photos



Second Floor Exterior Wall Sheathing



Second Floor Exterior Wall Sheathing



Second Floor Exterior Wall
– South West Side



Second Floor Exterior Wall
– West End

Progress Photos



Crawlspace Fire Stop Wall
- Cement Board Install



Crawlspace Fire Stop Wall
- Framing



Crawlspace Fire Stop Wall
- Ductwork openings



Crawlspace Fire Stop Wall

Progress Photos



Second Floor Exterior Window - Header



Second Floor Exterior Window - Lintel



Second Floor Exterior Wall
– Double Top Plate



Second Floor Exterior Wall
- Outside Corner

Progress Photos



Second Floor Exterior Wall
- Interior Corner



Second Floor Exterior Wall - Insulation



Second Floor Exterior Window
- Sill - Jamb Detail



Second Floor Exterior Wall
- Vapour Barrier

Progress Photos



Mechanical Material on Site



First Floor – Plumbing Cutouts



First Floor – Plumbing Cutouts



Second Floor – Plumbing Cutouts