

Weekly Report

Report # 28

August 15, 2020

Norway House Cree Nation

Health Centre of Excellence



Project:

- CD3 – Professional Accommodations

Larry Cove

JNR Construction

| Project Name: Professional Accommodations | | Project Number: CD3 – 19015B | |
|---|---------------------|------------------------------|-----------------|
| Safety Statistics | | | |
| Description | Previously Reported | This Period | Project to Date |
| Man Hours | 36609.5 | 1542 | 38151.5 |
| Sub trades | 2006 | 718 | 2724 |
| FLHAs | 4722 | 313 | 5035 |
| First Aides | 14 | 0 | 14 |
| Incidents | 10 | 0 | 10 |
| Daily Covid-19 Screenings | 1211 | 216 | 1427 |
| Quality/Engineering | | | |
| Items | Submitted | Resolved | Outstanding |
| RFIs | 61 | 59 | 2 |
| Shop Drawings | 77 | 72 | 5 |
| | | | |
| | | | |

Outstanding Concerns:

- RFIs
 - RFI 051 – Appliance Clearance – July 15/20
 - RFI 056 – Thermostat Location – August 13/20
- Shop Drawings
 - SD 060 Rev01 – Controls – August 11/20
 - SD 061 Rev01– Aluminum Entrances and Glazing – August 05/20
 - SD 063 Rev01 – Electrical Lighting – August 13/20
 - SD 064 – Bug and Rain Screen Vent – August 13/20
 - SD 056 – Fire Sprinklers – August 14/20

| Completed This Period | Comments or Concerns |
|--|----------------------------------|
| Install Fiberglass Windows | |
| Pour Gypcrete Flooring | |
| Construct Catwalk in Attic | |
| Prep sub floor for gypcrete | |
| Roof Truss Bracing | |
| Install Backing in Stairwell | |
| Dampproofing Exterior Grade Beam Concrete Wall | |
| Roofing- Drip Edge and Ice and Water Shield | |
| Pour Front Entrance Concrete Beam | |
| Below Grade Rigid Insulation | |
| Install CFI Panels on Grade Beam | |
| Plumbing Rough In | |
| Electrical Rough In | |
| | |
| To Complete Next Period | To complete the following Period |
| Roofing Shingles | Install Gypsum Board on Ceilings |
| Install CFI Panels on Grade Beam | Install CFI Panels on Grade Beam |
| Construct Attic Compartment Wall Doorways | |
| Frame Attic Access | |
| Soffit Framing | Soffit Framing |
| Construct Gable Wing Walls | Construct Gable Wing Walls |
| Electrical Rough-Ins | Electrical Rough-Ins |

Progress Photos



Exterior View – South West Wing



Exterior View – North West Wing



Exterior View – South East Wing



Exterior View – North East Wing

Progress Photos



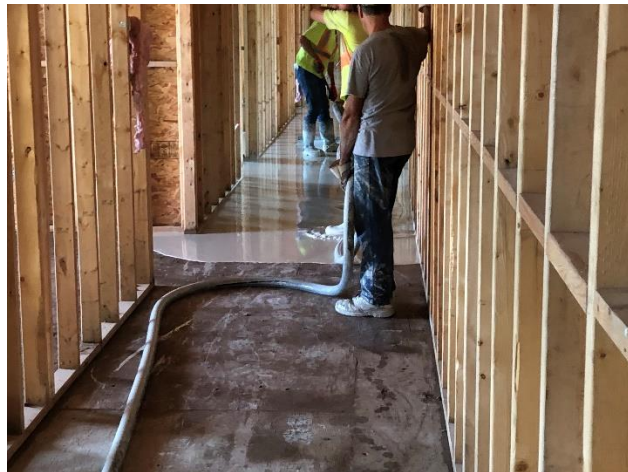
Fiberglass Window Install – South West Wing



Attic Catwalk Construction



Prep Sub Floor Sheathing for Gypcrete – Main Floor – West Wing



Apply Gypcrete Main Floor Corridor – West Wing

Progress Photos



Dampproofing and Blue Skin Install on Grade Beam – East End



Below Grade Insulation Install – North East Wing

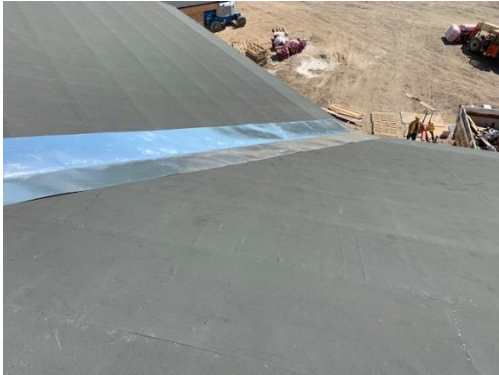


CFI Panels Install – South East End



Roof Drip Edge Install – South West Wing

Progress Photos



Roof Ice and Water Shield Install -
South West Wing



Roof Shingles Install – West End



Electrical Rough-In – Exterior – North West
Wing



Electrical Rough-in on Second Floor –
West Wing