

Weekly Report

Report # 31

September 5, 2020

Norway House Cree Nation

Health Centre of Excellence



Project:

- CD3 – Professional Accommodations

Larry Cove

JNR Construction

Project Name: Professional Accommodations		Project Number: CD3 – 19015B	
Safety Statistics			
Description	Previously Reported	This Period	Project to Date
Man Hours	37173	889	38062
Sub trades	3840	690	1070
FLHAs	5260	124	5384
First Aides	14	0	14
Incidents	10	0	10
Daily Covid-19 Screenings	1628	132	1760
Quality/Engineering			
Items	Submitted	Resolved	Outstanding
RFIs	66	62	4
Shop Drawings	85	81	4
Green Globes	3	0	3

Outstanding Concerns:

- RFIs
 - RFI 051 – Appliance Clearance – July 15/20
 - RFI 060 – Exterior Entrance Slab – Angle Iron – September 01/20
 - RFI 061 – Hydro Transformer Location – September 02/20
 - RFI 062 – Card Access Rough in Location – September 05/20
- Shop Drawings
 - SD 061 Rev02– Aluminum Entrances and Glazing – August 21/20
 - SD 067 – Mould Remediation Products – August 22/20
 - SD 068 – Lighting Type WT – August 25/20
 - SD 062 Rev02 – Electrical Lighting – August 25/20
- Green Globes
 - GG001– Fungicidal Protective Coating – August 28/20
 - GG002 – Disinfectant – August 28/20
 - GG003 – Foamed-in-Place Insulation – August 28/20

Completed This Period	Comments or Concerns
Frame Wood Stud Wall Around Elevator Shaft in Attic Space	
Paint and Install Backer Boards for Electrical Panels	
Install Flashing over CFI Panels	
Commercial Wrap Install	
Install Blueskin Around Window Frames (exterior) and Openings	
Spray Foam Around Windows	
Install Steel Stair's No.1 & No. 3	
Install Vapour Barrier on Second Floor Ceilings	
Install Resilient Channels on Main and Second Floor Corridor Walls and Ceiling	
Install Batt Insulation on Second Floor Suite Interior Walls (partial)	
Install Gypsum Board on Second Floor	
Frame Main Entrance Roof	
Fire Stop Electrical Penetrations from Second to Main Floor	
Electrical Rough ins on Main Floor	
Install Recess Electrical Panels in Corridors on Main and Second Floor	
Mould Remediation in Crawlspace	
Backfill Around Foundation Walls	

To Complete Next Period	To complete the following Period
Roofing Shingles	
Install Vapour Barrier on Main Floor Ceilings	Install Batt Insulation and Vapour Barrier on Second Floor Exterior Walls
Install Gypsum Board on Second Floor Ceilings	Install Gypsum Board on Main Floor Ceilings
Crawlspace Remediation	
Soffit Framing	Soffit Framing
Construct Gable Wing Walls	Construct Gable Wing Walls
Electrical Rough-Ins	Electrical Rough-Ins
Pour Exterior Mechanical Slabs	Mechanical Rough-Ins

Progress Photos



Exterior View – South West Wing



Exterior View – North West Wing



Exterior View – South East Wing



Exterior View – North East Wing

Progress Photos



Wood Stud Wall Framed Around
Elevator Shaft in Attic Space



Paint Backer Boards for Electrical
Panels



Install Backer Boards for Electrical
Panels in Electrical Room



Flashing Installation over CFI Panels -
South East Wing

Progress Photos



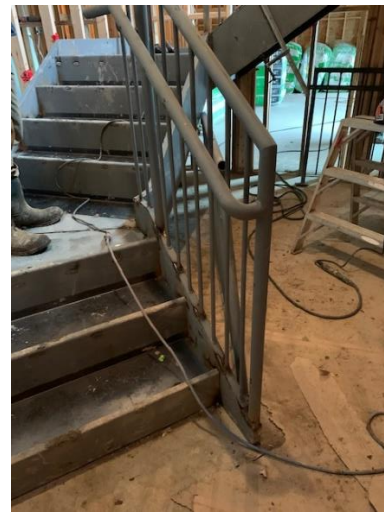
Commercial Wrap Installation –
South East Wing



Blueskin Installation Around Window
Frames – South East Wing



Spray Foam Around Windows



Steel Stair No. 1 Installation

Progress Photos



Temporary Steps Install on Stair No. 3



Vapour Barrier Install on Second Floor
Suite Ceiling - Suite 2Y:18



Resilient Channel Install on Main Floor
Corridor Ceiling – West Wing



Batt Insulation Install on Second Floor
Suite Wall (partial) – Suite 2Y:18

Progress Photos



Gypsum Board Install on Second Floor Corridor Ceiling – West Wing



Main Entrance Roof Framing



Fire Stopping Applied to Electrical Cables at recess Electrical Panel – Second Floor Corridor East Wing



Electrical Panel Install in Corridor Recess on Main Floor – West Wing

Progress Photos



Electrical Installation in Corridor Recess
on Main Floor – East Wing



Backfill Around Foundation Wall –
South West Wing