

Weekly Report

Report # 35

October 3, 2020

# Norway House Cree Nation

Health Centre of Excellence



Project:

- CD3 – Professional Accommodations

Larry Cove

JNR Construction

Project Name: Professional Accommodations		Project Number: CD3 – 19015B	
Safety Statistics			
Description	Previously Reported	This Period	Project to Date
Man Hours	39861	548	40409
Sub trades	6198	609	6807
FLHAs	5721	116	5837
First Aides	14	0	14
Incidents	10	1	11
Daily Covid-19 Screenings	2117	110	2227
Quality/Engineering			
Items	Submitted	Resolved	Outstanding
RFIs	73	73	0
Shop Drawings	90	87	3
Green Globes	5	5	0

**Outstanding Concerns:**

- RFIs
- Shop Drawings
  - SD 067 – Mould Remediation Products – September 10/20
  - SD 072 – Fire Extinguisher – September 23/20
  - SD 073 – Gypsum Concrete Underlayment – Repair – September 28/20
- Green Globes

Completed This Period	Comments or Concerns
CFI panels Install on Foundation Wall	
Soffit Framing	
Exterior Insulation Installation	
Strapping Install on Exterior Walls	
Steel Stud Installation on Second Floor	
Apply Drywall Tape and Mud to Gypsum Board	
Plumbing Rough-Ins	
Sprinkler Rough-Ins	
Electrical Rough-Ins	
Refrigeration Lines Install on Second Floor	
To Complete Next Period	To complete the following Period
Steel Stud Framing on Second Floor	Install backing in Steel Studs on Second Floor
Soffit Framing	
Strapping Install on Exterior Walls	
Drywall Tape and Mud Applied to Gypsum Board on Second Floor	
Exterior Insulation Install	
Sprinkler Rough-Ins	Sprinkler Rough-Ins
Electrical Rough-Ins	Electrical Rough-Ins
Refrigeration Lines Install on Second Floor	
Plumbing Rough-Ins	Plumbing Rough-Ins

## Progress Photos



Exterior View – South West Wing



Exterior View – North West Wing



Exterior View – South East Wing



Exterior View – North East Wing

## Progress Photos



CFI Panels Install on Grade Beam  
– South East Wing



Soffit Framing – East End



Exterior Rigid Insulation Install  
– East End



Strapping Install on Exterior Wall  
- North East Wing



## Progress Photos



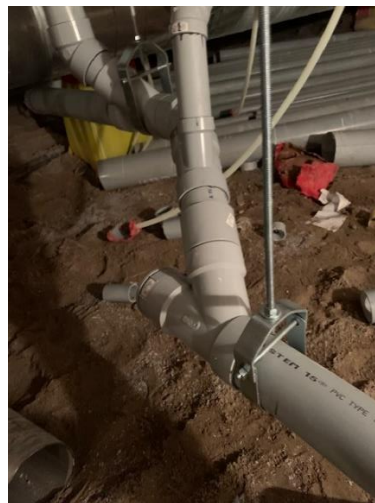
Steel Stud Install in Second Floor  
Suites – West Wing



Steel Stud Install in Second Floor  
Suites – East Wing



Apply Drywall Tape and Mud to  
Gypsum Board - West Wing



Sanitary Lines Install in Crawlspace  
– East Wing

## Progress Photos



Sanitary Line Install to Second Floor  
- West Wing



Sanitary Line Test No. 2 – East Wing



Sprinkler Line Install in Second Floor  
Suite – East Wing



Sprinkler Line Install in Second  
Floor Suite – West Wing

## Progress Photos



Electrical Cable Pull from Electrical  
Electrical Room to CSTE



Electrical Box Install in Second Floor  
Suite – West Wing



Electrical Box and Wiring Install in  
Second Floor Suite – West Wing



Firestopping Sealant Applied to  
Electrical Penetration on Second  
Floor – West Wing



### Progress Photos



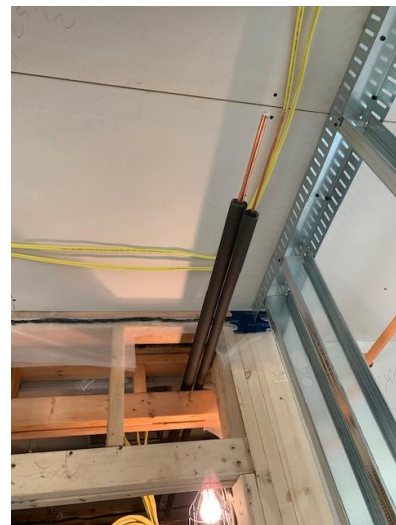
Hangers Install for Refrigeration Lines  
on Second Floor Corridor Ceiling – East Wing



Refrigeration Lines Install in  
Second Floor Corridor – East Wing



Refrigeration Line Install in Second  
Floor Corridor – West Wing



Refrigeration Line Install in Second  
Floor Suite – West Wing