

WEEKLY REPORT
REPORT NO. 41

DECEMBER 3, 2020

NORWAY HOUSE CREE NATION

HEALTH CENTRE OF EXCELLENCE



PROJECT: NHCN CD3 PROFESSIONAL ACCOMMODATIONS



PREPARED BY:
AMANDA COTTRILL
JNR CONSTRUCTION

PROJECT NAME: PROFESSIONAL ACCOMMODATIONS		PROJECT NUMBER: CD3 – 19015B	
SAFETY STATISTICS			
DESCRIPTION	PREVIOUSLY REPORTED	THIS PERIOD	PROJECT TO DATE
MAN HOURS	43745	726	44171
SUB TRADES	9432	572	10004
FLHAS	6319	76	6395
FIRST AIDES	14	0	14
INCIDENTS	14	2	16
DAILY COVID SCREENINGS	2964	99	3063
QUALITY/ENGINEERING			
ITEMS	SUBMITTED	RESOLVED	OUTSTANDING
RFIS	76	76	0
SHOP DRAWINGS	80	80	0
GREEN GLOBES	17	17	0

OUTSTANDING CONCERNS:

- Trades leaving site due to COVID concerns.

COMPLETED THIS PERIOD	COMMENTS OR CONCERNS
Front Entry Backfill	
Insulation on Ductwork	
Steel Stud Walls	
Fiber Cement Siding Installation	
Fiber Cement Panel Trim Install	
Gypsum Board on Main Floor	
Electrical Rough Ins	
Exterior Strapping	
Domestic Water Line Install	
Shower Fit Up	

TO COMPLETE NEXT PERIOD	TO COMPLETE THE FOLLOWING PERIOD
Refrigeration/AC Rough Ins	Fiber Cement Siding Installation
Electrical Rough Ins	Electrical Rough Ins
Plumbing Rough Ins	Plumbing Rough Ins
Crawlspace Mechanical Rough Ins	Gypsum Board on Main Floor
Fiber Cement Siding Installation	Hollow Metal Door Frame Installation
Fiber Cement Panel Trim Install	
Gypsum Board on Main Floor	

PROGRESS PHOTOS



Exterior View – South West Wing



Exterior View – South East Wing



Exterior Strapping Installation



Fiber Cement Trim Installation

PROGRESS PHOTOS



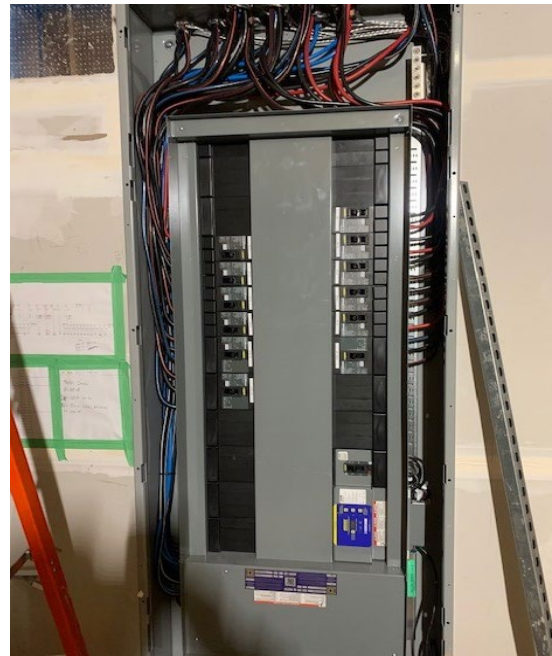
Fiber Cement Siding Install



Steel Stud Framing Second Floor



Steel Stud Framing Second Floor



Electrical Wiring at Main Panel

PROGRESS PHOTOS



Mechanical Shaft Insulation Install



Mechanical Shaft Gypsum Board Install



Ductwork Install Second Floor



Shower Fit Up